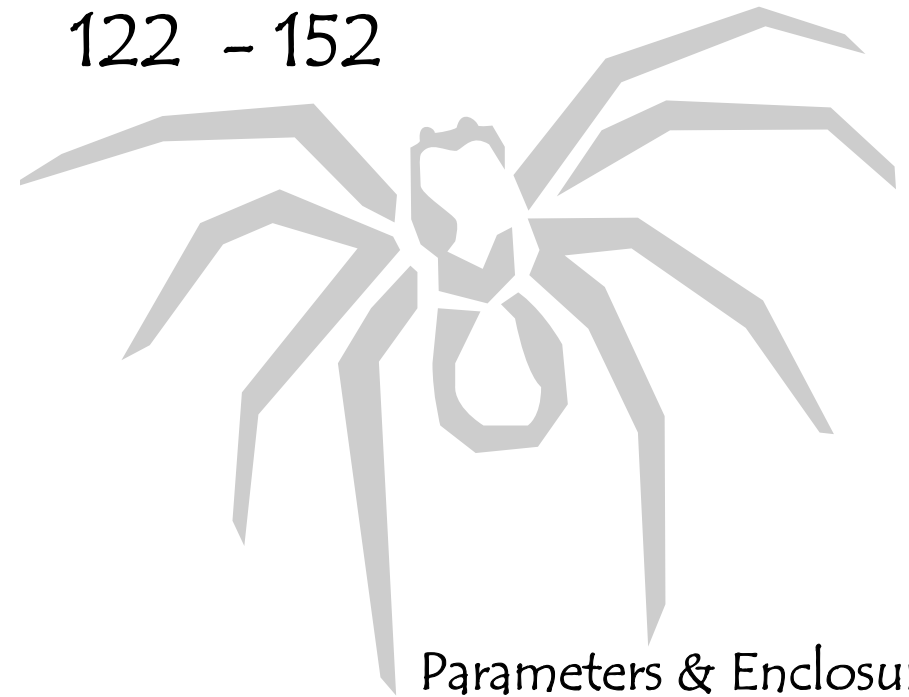


SPLX

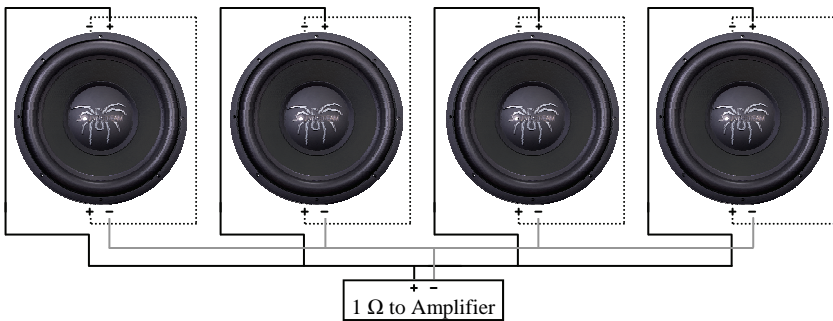
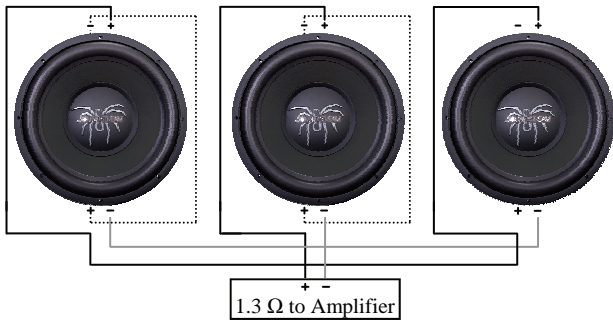
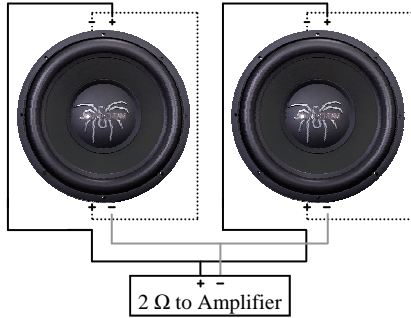
High Efficiency

SPLX-HF

122 - 152



Parameters & Enclosure
Recommendations



Congratulations on your new Soundstream sub-woofer purchase. We greatly appreciate your business. This may look like a run-of-the-mill cardboard box, but it's actually a protective barrier over one of the finest engineered and assembled sub-woofers available.

Harmonic Indulgence... Listen and Feel

Features, Parameters, & Dimensions

Aluminum Voice Coil Former
Epoxy Coated Pulp Paper Cone
UV Coated Foam Surround
Dual NOMEX Spiders
ABS Injection Dust Cap
Vented T-Yoke

Suspension Integrated Tinsel Leads
Cast Aluminum Basket
Copper Clad Aluminum Voice Coil
8 ga. Compression Wire Terminal
94 oz. Ferrite Magnet
Embossed Back Plate

series wired	SPLX-122HF	SPLX-152HF
Fs (Hz)	40.32	35.96
Qms	6.348	6.476
Vas (ft ³)	0.936	87.56
Cms (mm/N)	0.072	0.0794
Mms (g)	218.0	247.1
Xmax (mm)	13.00	13.00
Xmech (mm)	19.50	19.50
Piston Diameter (in)	10.04	13.19
Sd (in ²)	79.16	136.6
Qes	0.453	0.503
Re (Ω)	2.92	2.95
Z (Ω)	4	4
BL (Tm)	18.88	18.09
Rms Power (watts)	1,000	1,250
Qts	0.423	0.467
NO (%)	0.37	0.78
1w/1m SPL (dB)	87.70	90.95
Voice Coil Diameter (in)	3"	3"
Impedance (Ω)	DVC 2Ω	DVC 2Ω
M-vd (ft. ³)	.188	.298
Overall Diameter (in)	12.625	15.25
Overall Height (in)	8.125	9.25
Mounting Depth (in)	7	8.375
Cutout Diameter (in)	11	14.125
Motor Diameter (in)	7.75	7.875
Motor Height (in)	3.5	3.5
Flange Width (in)	.875	.75
Flange Height (in)	.75	.625
Weight (lbs)	34	35

WWW.SOUNDSTREAM.COM

Enclosure Dimensions

Soundstream does not provide enclosure dimensions as there are infinite variables when designing a box, i.e. vehicle, amplifier, music preferences, etc... For designs tailored to your specific needs, please contact us at tech-support@soundstream.com, or 1-800-724-1377.

Enclosure Construction

All enclosures should be made of .75" (3/4") material only. When possible, make the baffle 1.5" (1 1/2) thick and add .75" (3/4") to the depth of the enclosure to compensate. All volumes **INCLUDE** vent/port and subwoofer displacements. **DO NOT** change the volume unless you plan on adding a substantial amount of bracing. For added performance, applying a coat of fiberglass resin to the interior walls will greatly improve sealing the enclosure. Adding a thin layer of poly-fill will improve response by smoothing out reflections within the enclosure.

Enclosure Recommendations

SPLX-122HF High Tuning					SPLX-122HF Low Tuning			
Vol. (ft. ³)	Vent (dia. X L)	Freq. (Hz)	-3dB (Hz)	Gain (dB @ Hz)	Vol. (ft. ³)	Vent (dia. X L)	Freq. (Hz)	-3dB (Hz)
2.00	(2) 4" x 11.75"	50.2	41.5	4.7 @ 54.6	2.50	(3) 3" x 14"	39.9	34.2
3.00	(3) 4" x 11.75"	50.1	40.8	6.1 @ 52.7	3.50	(3) 3" x 12.25"	34.1	29.8
4.00	(3) 4" x 6.25"	50.1	40.8	7.1 @ 51.8	4.50	(2) 4" x 14.5"	30.0	26.7

SPLX-152HF High Tuning					SPLX-152HF Low Tuning			
Vol. (ft. ³)	Vent (dia. X L)	Freq. (Hz)	-3dB (Hz)	Gain (dB @ Hz)	Vol. (ft. ³)	Vent (dia. X L)	Freq. (Hz)	-3dB (Hz)
3.00	(2) 4" x 6.5"	50.4	43.0	4.4 @ 64.3	4.00	(2) 4" x 8.25"	40.0	35.4
4.00	(4) 4" x 12.25"	50.1	41.4	4.9 @ 60.1	5.00	(2) 4" x 8.5"	35.0	31.4
5.00	(6) 4" x 16.50"	50.1	40.8	5.3 @ 57.6	6.00	(2) 4" x 10"	30.0	28.0

WWW.SOUNDSTREAM.COM