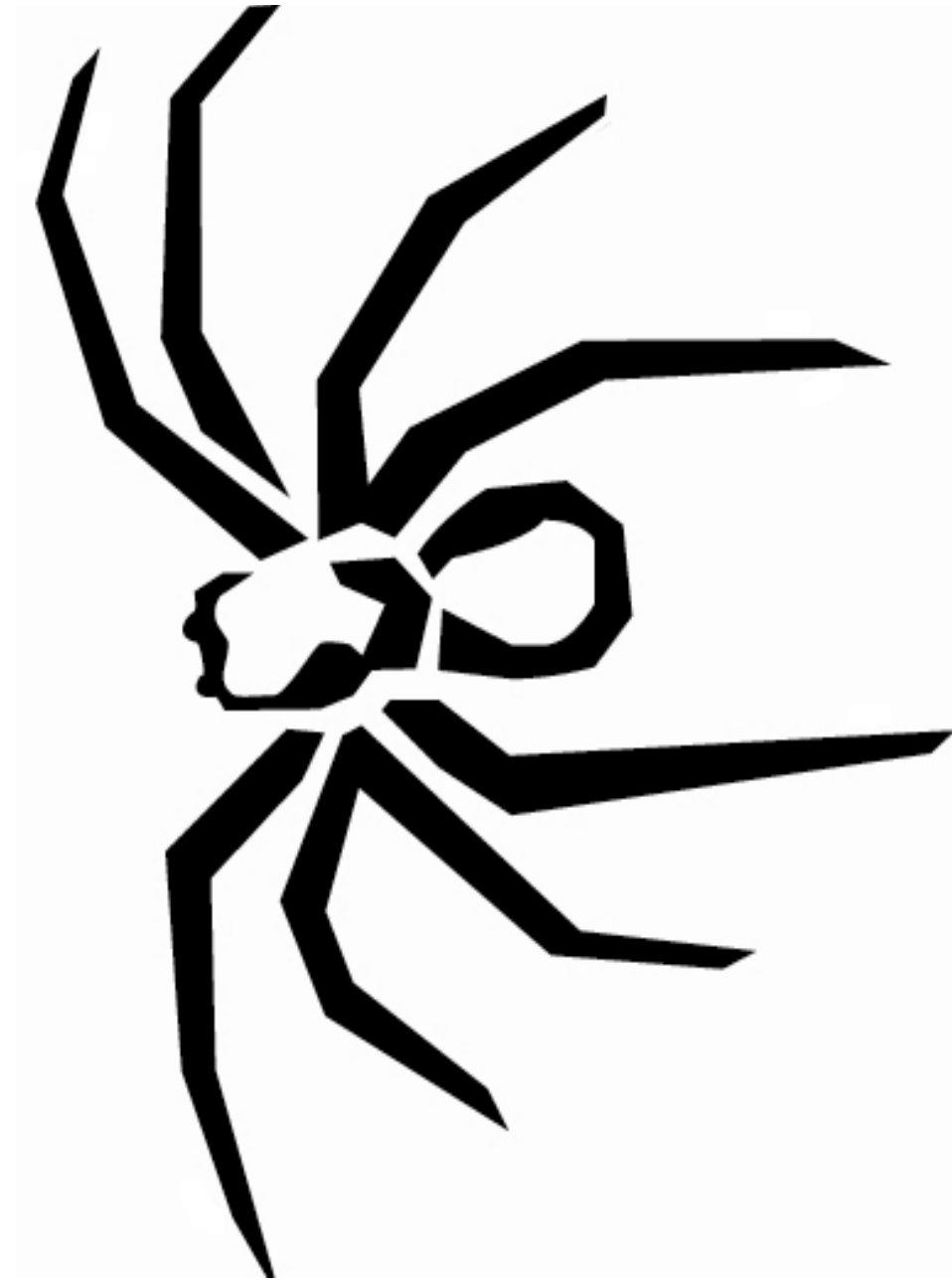


SOUNDSTREAM

T E C H N O L O G I E S

XXX

Woofers & Enclosure
Information



Congratulations on your new Soundstream sub-woofer purchase. We greatly appreciate your business. This may look like is a run of the mill cardboard box, but is actually a protective barrier over one of the finest engineered and assembled subwoofer available.

Harmonic Indulgence... Listen and Feel

Theil/Small Parameters & Specifications

series wired	XXX-15	XXX-18
Fs	24.63	22.29
Qms	5.780	5.866
Vas (ft^3)	3.218	5.504
Cms (mm/N)	.109	.119
Mms (g)	384.8	430.2
Rms (kg/s)	10.260	10.230
Xmax (mm)	25.00	35.00
Sd (in^2)	119.20	149.10
Qes	.187	.191
Re	1.20	1.20
Z	1.2	1.2
BL (Telsa)	19.57	19.47
RMS Power	9,000	10,000
Qts	.181	.185
1w/1m SPL	90.50	91.40
Depth	9.625	11.125
Cutout Dia.	14.250	16.75
Voice Coil	QVC 1Ω	QVC 1Ω

Enclosure Dimensions

Soundstream does not provide enclosure dimensions as there are infinite variables when designing a box, i.e. vehicle, amplifier, music preferences, etc... For designs tailored to your specific needs, please contact us at tech-support@soundstream.com

Enclosure Construction

All enclosures should be made of .75" (3/4") material only. When possible, make the baffle 1.5" (1 1/2) thick and add .75" (3/4") to the depth of the enclosure to compensate. All volumes **INCLUDE** vent/port and subwoofer displacements. **DO NOT** change the volume unless you plan on adding a substantial amount of bracing. For added performance, applying a coat of fiberglass resin to the interior walls will greatly improve sealing the enclosure. Adding a thin layer of poly-fill will improve response by smoothing out reflections within the enclosure

Enclosure Recommendations

XXX-15 Ported				
	Vol.	Port	FB	F3
Min	3	(2) 4x7.5	49.85	43.77
Opt	4.5	(3) 4x6.25	49.66	42.92
Max	6	(4) 4x5.5	49.59	42.61

XXX-18 Ported				
	Vol.	Port	FB	F3
Min	4	(4) 4x15	49.91	43.54
Opt	6	(3) 6x13.5	50.00	42.71
Max	8	(4) 6x12	49.84	42.24