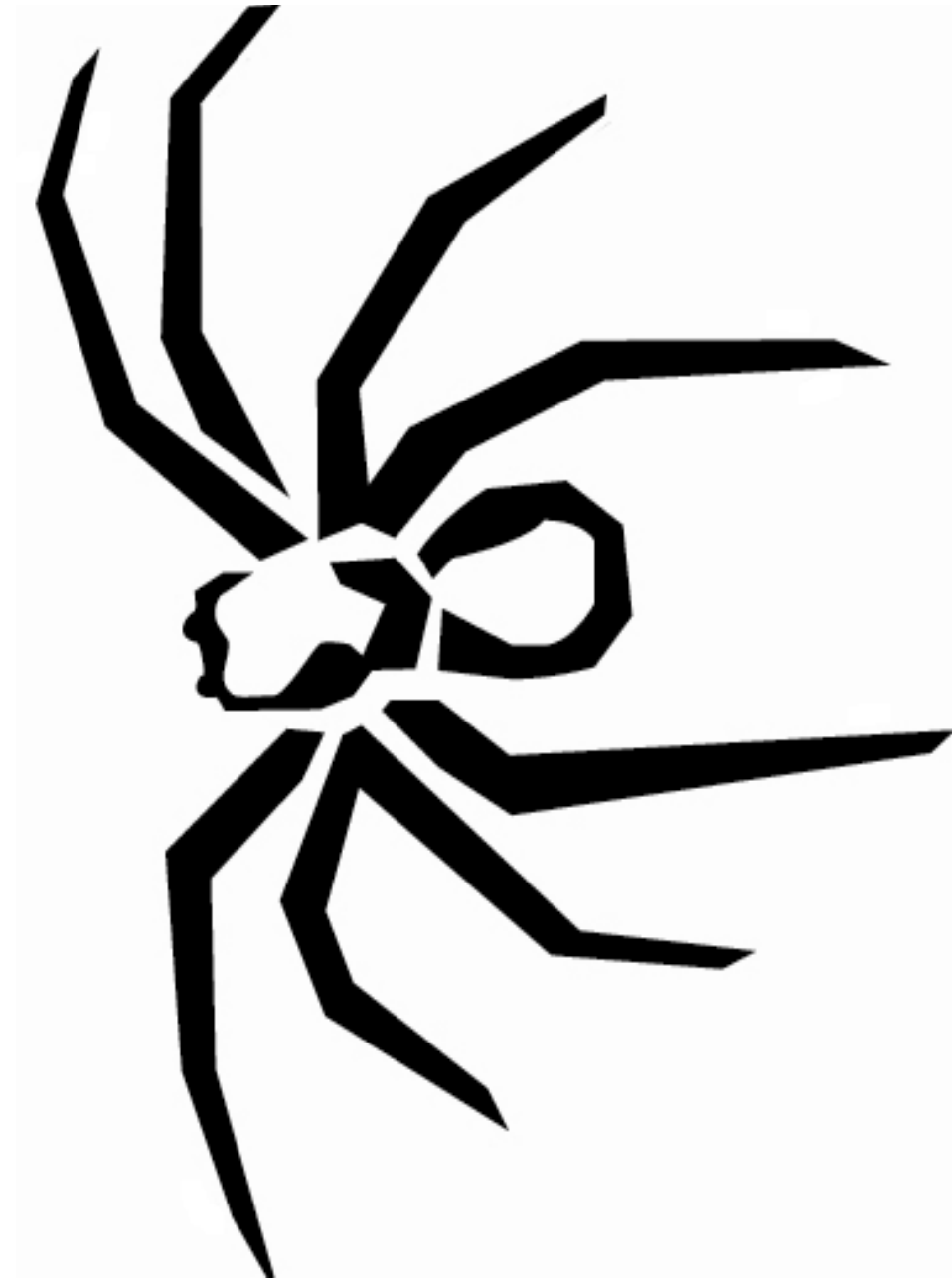


SOUNDSTREAM

T E C H N O L O G I E S

X-DR20

Woofers & Enclosure
Information



Congratulations on your new Soundstream sub-woofer purchase. We greatly appreciate your business. This may look like is a run of the mill cardboard box, but is actually a protective barrier over one of the finest engineered and assembled subwoofer available.

Harmonic Indulgence... Listen and Feel

Theil/Small Parameters & Specifications

series wired	X-Pro 10	X-Pro 12
Fs	34.92	27.23
Qms	5.351	3.241
Vas (ft ³)	1.026	2.198
Cms (mm/N)	.2070	.1680
Mms (g)	100.2	203.2
Rms (kg/s)	4.107	10.73
Xmax (mm)	8.5	8.5
Sd (in ²)	48.69	79.16
Qes	.548	.395
Re	8	6.8
Z	8	8
BL (Telsa)	17.92	24.46
RMS Power	500	600
Qts	.497	.352
1w/1m SPL	85.4	86.9
Depth	5.25	5.875
Cutout Dia.	9	11.125
Voice Coil	DVC 4	DVC 4

Enclosure Dimensions

Soundstream does not provide enclosure dimensions as there are infinite variables when designing a box, i.e. vehicle, amplifier, music preferences, etc... For designs tailored to your specific needs, please contact us at tech-support@soundstream.com

Enclosure Construction

All enclosures should be made of .75" (3/4") material only. When possible, make the baffle 1.5" (1 1/2) thick and add .75" (3/4") to the depth of the enclosure to compensate. All volumes **INCLUDE** vent/port and subwoofer displacements. **DO NOT** change the volume unless you plan on adding a substantial amount of bracing. For added performance, applying a coat of fiberglass resin to the interior walls will greatly improve sealing the enclosure. Adding a thin layer of poly-fill will improve response by smoothing out reflections within the enclosure

Enclosure Recommendations

X-Pro 10 Sealed				X-Pro 12 Sealed		
	Vol.	Qtc	F3	Vol.	Qtc	F3
Min	.5	.802	57.57	1	.599	61.84
Opt	.75	.703	55.3	1.25	.554	63.07
Max	1	.649	55.63	1.5	.522	64.27

X-Pro 10 Ported				X-Pro 12 Ported		
	Vol.	Port	FB/F3	Vol.	Port	FB/F3
Min	1	3x12	40/37	2	4x12	36/32
Opt	1.25	3x12	35/33	2.25	4x11.75	34/31
Max	1.5	3x13.75	30/29	2.5	4x11.75	32/29.