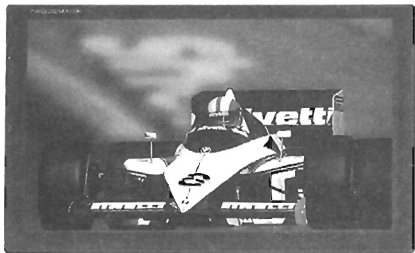


Instruction Manual



**6.2 INCH WIDE SCREEN TFT LCD MONITOR
FOR HEADREST**

Contents

Introduction	3
Warning	4
Safety Precautions	4
Box Contents	5
Name and Function of Each Part	6
Wiring Diagram (Installation).....	7
Video Playback Application.....	8
How to Control the Monitor	9
Power On/Off	9
Picture Control Menu	11
Troubleshooting	12
Specifications	13

Introduction

This unit is full-featured color 6.2 inch wide TFT LCD monitor for headrest.

- 6.2" Wide Screen TFT LCD
- Remote Control
- Full Function on Screen Display
- 2 Video Inputs
- Remote Control Board Function for DVD Player
 - Controls only compatible (Same brand) DVD Players
- IR Remote Sensor
- NTSC/PAL Auto Selection
- HI-Resolution : 1440 (H) x 234 (V)
- Full-Function Control
 - Brightness
 - Contrast
 - Saturation
 - Hue
 - Sharpness

Warning

(Improper Handling or Ignoring the Following Warning may Result in Serious Injury.)

- Don't watch or operate the monitor while driving. It may cause a car accident because of the distraction.
- Don't install the monitor on a place where obstruct the drivers view or near an air bag device.
- Note that TFT LCD is very fragile and could be easily damaged. Do not press or scratch the surface.
- If the liquid crystal material leaks from the LCD panel, it should be kept away from the eyes or mouth. In case of contact with hands, legs or clothes, it must be washed away thoroughly with soap.
- Don't attempt to service this product yourself.
- Keep liquid from the unit to avoid possible electric shock or damage.
- In case of smoking or rare odor from the monitor, power off the monitor immediately and contact dealer for service.

Safety Precautions

(Improper Handling or Ignoring the Following Safety Precautions may Result in Serious Injury.)

- Don't watch Video while the car's engine is off.
(It may drain the car battery)
- Avoid positioning monitor in direct direct sunlight, heat or moisture when installing this unit.
- In case of changing fuse, use proper Amperage (2A) to avoid malfunction.
- Keep the monitor screen away from children to avoid possible LCD breakage.
- Don't move the unit during playback.
- This unit is designed to be used with 12 Volt DC only.

BOX Contents

After purchasing this product, open the packaging and see if any of the components listed below are damaged or missing. If there is an abnormality, make an inquire with your place of purchase. These images are to facilitate the use and functions of the unit to the consumer, they may differ slightly from the actual unit due to specification changes.



Unit 1 EA



Headrest Case 1 EA



Frame 1 EA



Remote Control 1 EA



Open Key 2 EA



Video Input &
Power Cable 1 EA



IR Repeater Link 1 EA



M4 x 15mm

Screw 6 EA
(For Headrest Case)



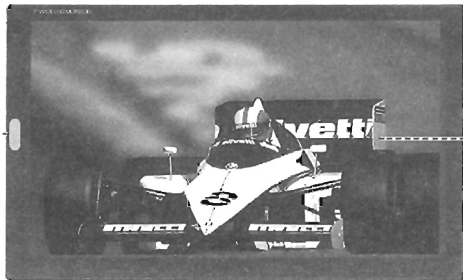
Manual 1 EA



Warranty Card 1 EA
Registration Card 1 EA

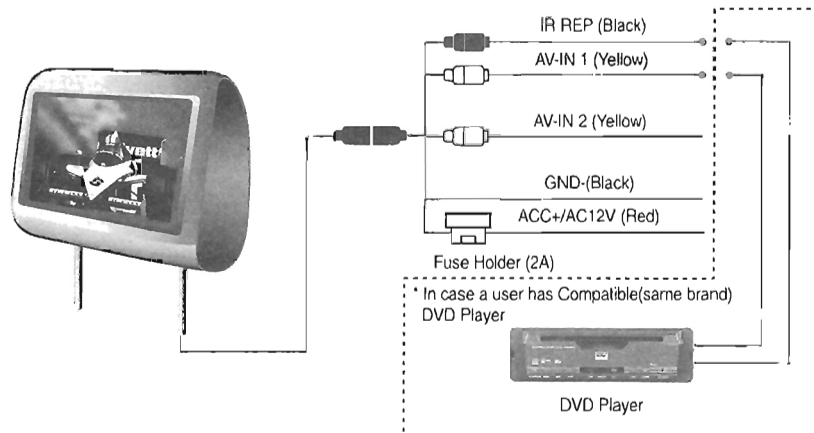
Name and Function of Each Part

IR Remote Control Sensor



TFT LCD Panel Screen

Wiring Diagram (Installation)



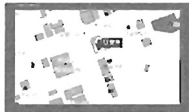
Main Function

- 1 Monitor is capable of video playback from 2 video source (AV/AV2) with standard composite RCA video output.

Car DVD Player



Car Navigation



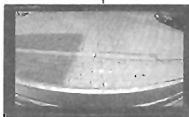
Game Gear



TV TUNER



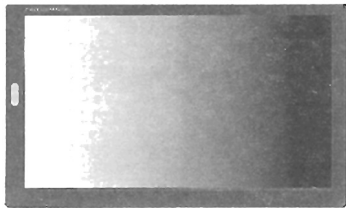
Back up Camera



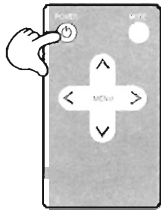
How to Control the Monitor

■ Power On/Off

Aim at the IR Sensor with remote control and press the POWER button to turn on or off the monitor.

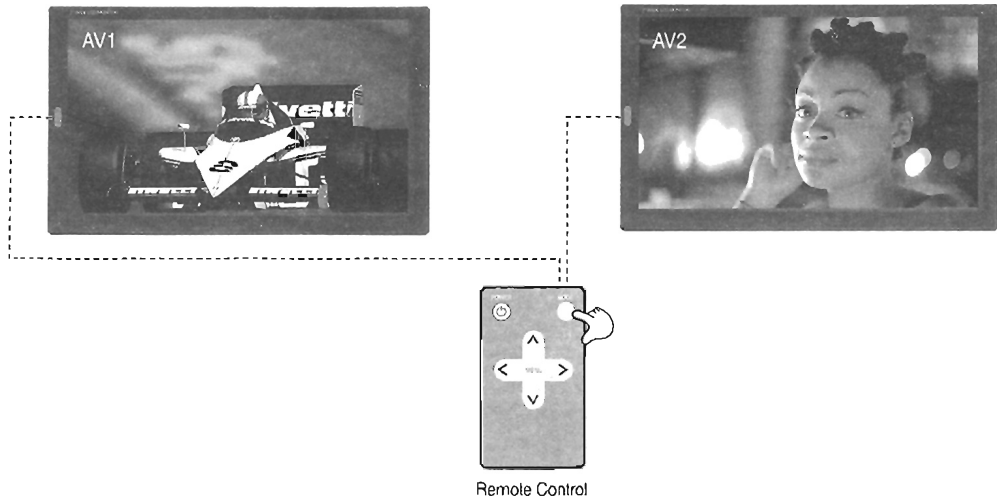


Monitor



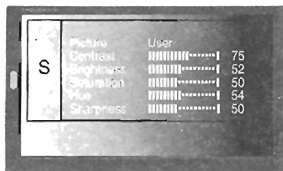
Remote Control

How to Control the Monitor



Press the mode button to change an input mode (AV1 ↔ AV2).

Picture Control Menu



NOTE

Menu will disappear after 5 sec, when not in use.

- 1 When the MENU button on the monitor screen is pressed, the Picture menu will be shown displayed.
<Remote control : Press the MENU button.>
Press Up or Down button for the Setup menu.

2 Picture menu

- Picture : User
Contrast : Adjusts the clarity of the whole screen.
Brightness : Adjusts the Brightness of the whole screen.
Saturation : Adjusts the Intensity of a specific hue.
Hue : Adjusts the colors of the image.
Sharpness : Corrects the contours of the image.

Setup menu

- Language : Changes language (English, Franch, Deutsch, Espanol, Korea)
Panel Up Down : Display Up, Down
Reset : Returns to factory defaults

- 3 Press ► button to highlight the main menu and press Up or Down button to select desired menu.
Press ► button to highlight the sub main menu.
Press ▷ or ◀ button to adjust the value while OSD is still display on the screen.
Press MENU button to return to the previous menu and exit.
(Press Up or Down button to move to the other main menu.)

TROUBLE	CORRECTIVE ACTION
No Power	Check that the DC power cable is connected properly.
No Picture	Check that the INPUT cables is connected properly. Check that the unit is power on.
Stopped Picture	Check that the DVD player is not pause mode.
The remote control doesn't work properly.	Remove any obstructions between the remote control and remote control sensor of the unit. Operate the remote control at a closer distance to the unit.
No function with the remote control	Check the battery and make sure that the battery new.

Specification

Power Source	DC 12V 2A
Power Consumption	6W
Video System	NTSC/PAL Auto Selection
Display Type	6.2 Inch Wide TFT LCD Screen
Control Type	Touch Screen, IR Remote Sensor
Resolution	1440 (H) x 234 (V)
Operating Temp.	-20°C ~ +70°C
Storage Temp.	-30°C ~ +80°C
Viewing Angle	+35° ~ -50°(V) +60° ~ -60°(H)
Video Input	1.0Vp-p (75Ω)
Net Weight	300g (Set Only)
Dimension	6.5" (W) x 3.9" (D) x 1.2" (H) (Set Only) 165.4mm (W) x 98.8mm (D) x 27.9mm (H) (Set Only)

Note :

This equipment has been tested and found to comply with the limits for a Class B digital device, pursuant to part 15 of the FCC Rules. These limits are designed to provide reasonable protection against harmful interference in a residential installation. This equipment generates, uses and can radiate radio frequency energy and, if not installed and used in accordance with the instructions, may cause harmful interference to radio communications. However, there is no guarantee that interference will not occur in a particular installation. If this equipment does cause harmful interference to radio or television reception, which can be determined by turning the equipment off and on, the user is encouraged to try to correct the interference by one or more of the following measures.

- Reorient or relocate the receiving antenna.
- Increase the separation between the equipment and receiver
- Connect the equipment into an outlet on a circuit different from that to which the receiver is connected.
- Consult the dealer or an experienced radio/TV technician for help.

Modifications not expressly approved by the manufacturer could void the user's authority to operate the equipment under FCC rules.