

# OWNER'S MANUAL

## 8.5" WIDE TFT-LCD COLOR SCREEN OVERHEAD MONITOR



46M85POAC01-DY-0311

### CAUTION

Changes or modifications not expressly approved by the party responsible for compliance could void the user's authority to operate the equipment.

# CONTENTS

<b>CAUTION</b> .....	3
<b>NAME AND FUNCTION OF EACH PARTS</b> .....	5
Unit .....	5
Remote controller .....	6
<b>HOW TO OPERATE THE MONITOR</b> .....	7
Monitor angle adjustment .....	7
How to watch monitor .....	7
<b>PICTURE CONTROL</b> .....	8
Auto picture control .....	8
Manual picture control .....	8
<b>SCREEN MODE</b> .....	9
Screen .....	9
<b>INSTALLATION</b> .....	10
<b>CONNECTION DIAGRAM</b> .....	11
<b>SPECIFICATIONS</b> .....	12

# CAUTION

Please read and observe all warnings and instructions in this owner's manual and those marked on the unit. Retain this booklet for future reference.

There are two kinds of alarm symbols as follows:



WARNING

The lightning flash with arrowhead symbol within an equilateral triangle is intended to alert the user to the presence of "dangerous voltage" within the product's enclosure that may be of sufficient magnitude to constitute a risk of electric shock to people.



CAUTION

The exclamation point within an equilateral triangle is intended to alert the user to the presence of important operating and maintenance (servicing) instructions in the literature accompanying the product.

## WARNING



Installation of all TV monitors must be out of the driver's field of sight.



Do not mount the product where it will obstruct the deployment of the airbag or in an area where it would affect the vehicular control. Also be careful to avoid mounting the product where it can become hazardous during sudden stops or in the event of an accident.



Do not try and service these products yourself, seek only a qualified service center or factory service center.



Use extra caution with any liquids in your car. If you or your child spill any liquid on these products, pull your vehicle to the roadside and turn the key off to disconnect or wipe the products with a towel. Do not operate the equipment until all liquids have either evaporated or you have had the monitor inspected at a service center by a qualified technician. Severe harm or danger can be occurred.



Be careful not to drop or apply under pressure to the front panel of your video monitor. If the screen cracks due to misuse, your warranty will be void!



Be careful not to overload your cigarette lighter plug by adding more than one device at a time.



Use only a damp cloth to clean the screen and use only purified water on the cloth, wring out all excess water prior to wiping the screen. Do not use any cleaners or chemicals to clean the screen. In most cases a dry cloth will do!

A grade screens constitute no more than 3 missing pixels.

# CAUTION

## ⚠ CAUTION



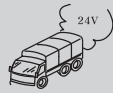
Quality installations are best performed by qualified and certified installers.



Watching the monitor for an extended period of time without the engine running may deplete the vehicle's battery charge.



Don't touch the unit there is a flash of lightening. It may receive an electric shock.



This product is designed for operation with a 12 Volt DC, negative ground vehicle. It is not suitable for operation under other conditions or voltages.



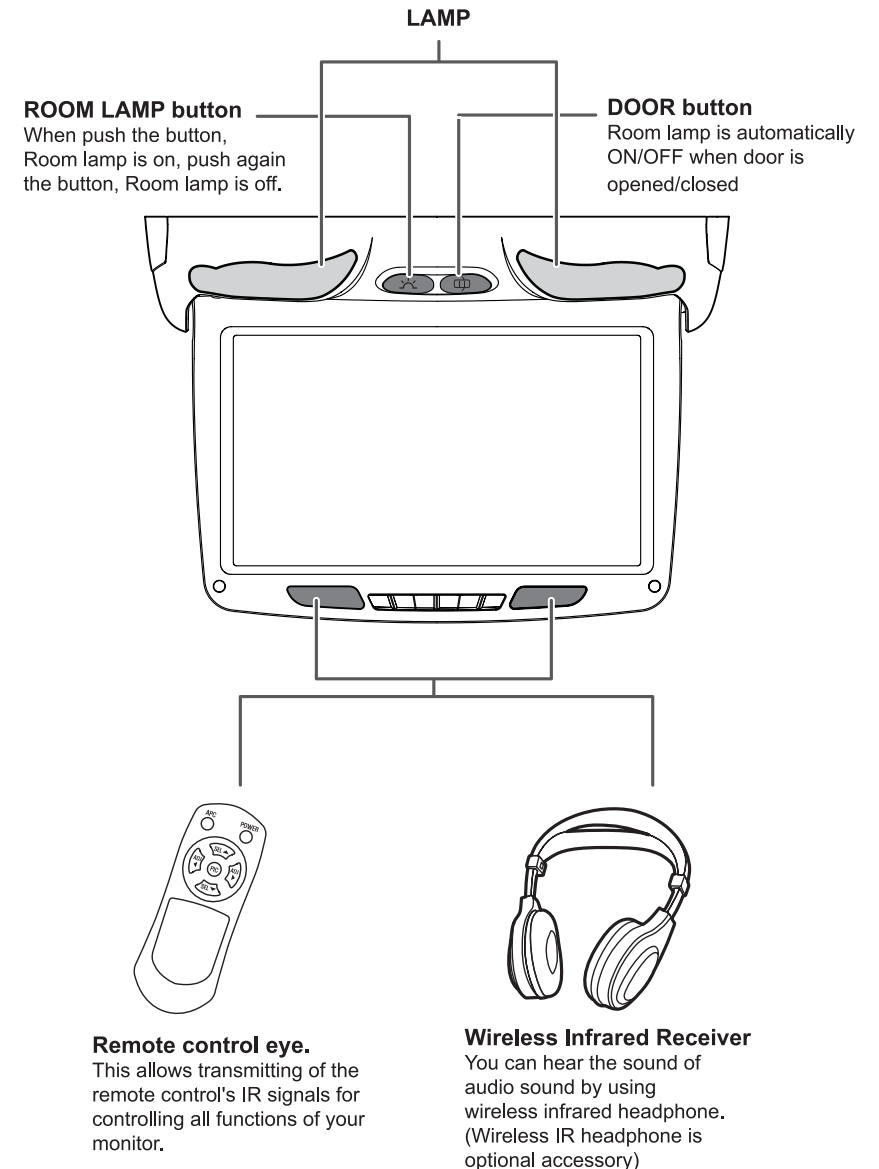
Do not cover or stop up heater ducts or vents. It may be the origin of a fire or receives an electric shock.

## 👉 Check Point

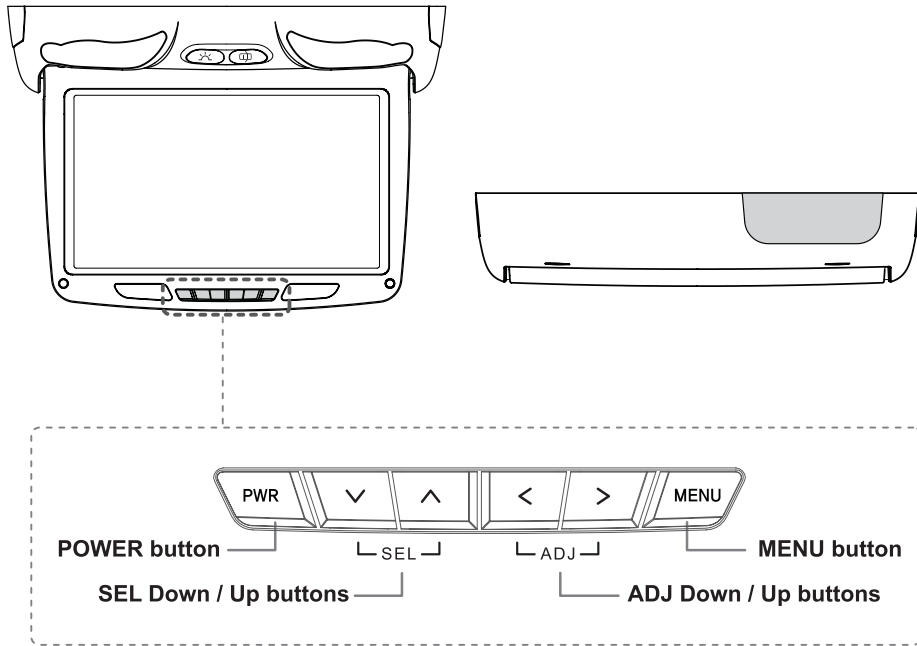
1. The operating temperature of this product is limited to  $-4^{\circ}\text{F} \sim +176^{\circ}\text{F}$ . Your vehicle can reach temperatures up to  $212^{\circ}\text{F}$  in the summertime.
2. From time to time when your vehicle is extremely hot or cold you must allow time for your air conditioner or heater to cool or heat the vehicle and for operating temperatures to return to normal operating ranges. Your monitor will return to its normal functions when these operating ranges are achieved.
3. Your optimum picture quality is achieved when you are directly in front of the monitor (+/-30 degrees).

# NAME AND FUNCTION OF EACH PARTS

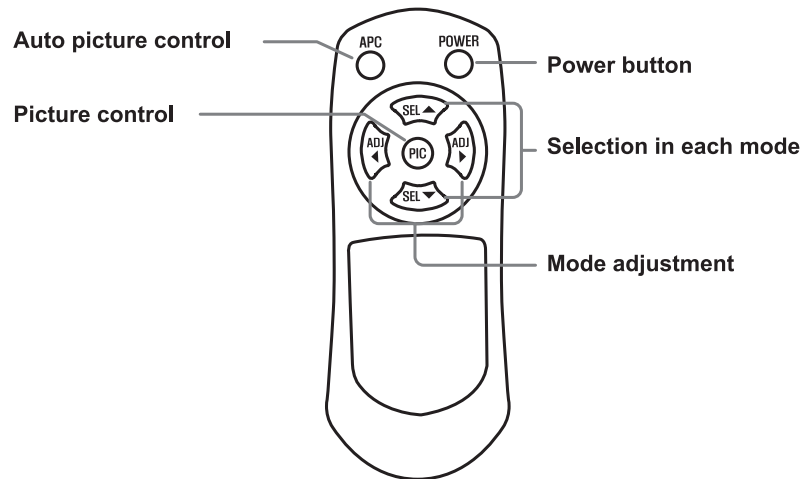
## ● Unit



# NAME AND FUNCTION OF EACH PARTS



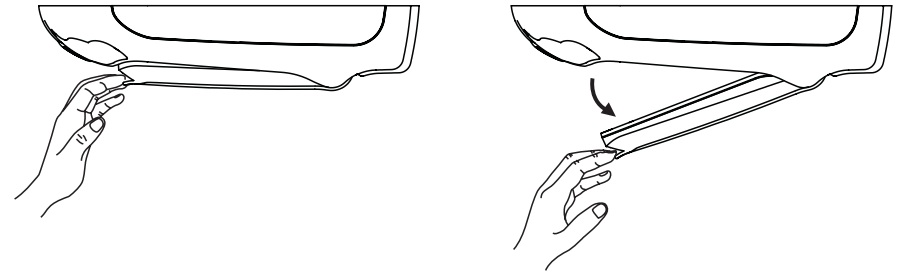
## Remote controller



# HOW TO OPERATE THE MONITOR

## Monitor angle adjustment

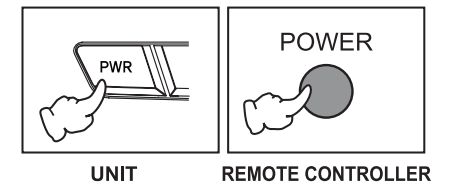
The monitor opens when the handle is pulled down.



## How to watch monitor

1. Connect the monitor to external devices.

1. Press the **POWER** button on either the remote controller or the unit once to turn the power on. Press the same **POWER** button to turn the power off.



3. Power on the external devices and play.

# PICTURE CONTROL

## ● Auto picture control



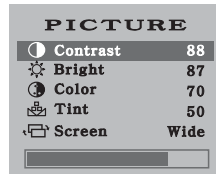
Press this button to change picture mode.  
When you press this **APC** button, Picture mode will be changed as follows;



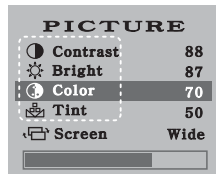
## ● Manual picture control

**CONTRAST/BRIGHT/COLOR/TINT** and change the picture setting to user's preference.

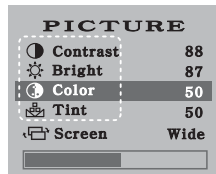
1. Bring up the on-screen **PICTURE** menu by pressing the **PIC** button on the remote controller or the **MENU** button on the unit.



2. Select **Contrast/Bright/Color/Tint** by pressing the **SELV/▲** button on the remote controller or on the unit.



3. Select the desired mode pressing the **ADJ </>** buttons on the remote controller or on the unit.

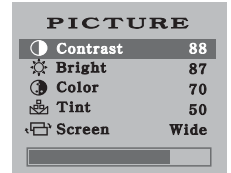


# SCREEN MODE

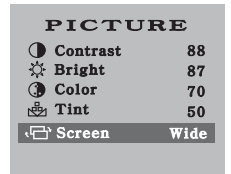
## ● Screen

Select the desired screen modes as your taste.

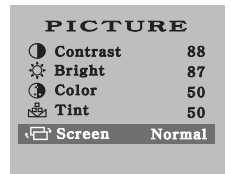
1. Bring up the on-screen **PICTURE** menu by pressing the **PIC** button on the remote controller or the **MENU** button on the unit.



2. Select **Screen** menu by pressing the **SELV/▲** button on the remote controller or on the unit.



3. Select the desired mode pressing the **ADJ </>** buttons on the remote controller or on the unit.



※ Each Modes will be displayed as below;



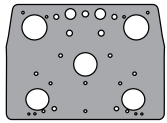
The screen will be viewing at standard 4:3 ratio.



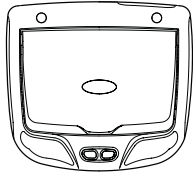
The screen will be to viewing at magnified 16 : 9 ratio.

# INSTALLATION

1. Unpack the color box and check the contents.



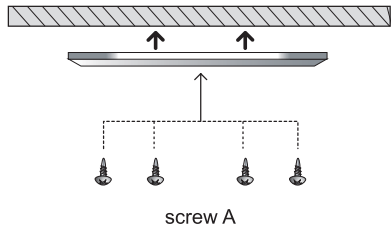
INSTALLATION PLATE



UNIT

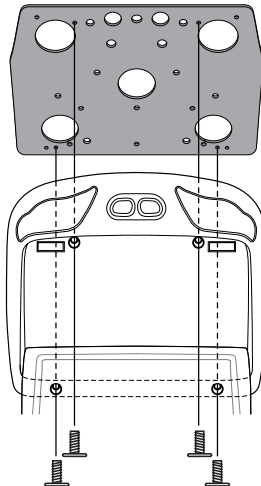


SCREW A SCREW B  
SCREW

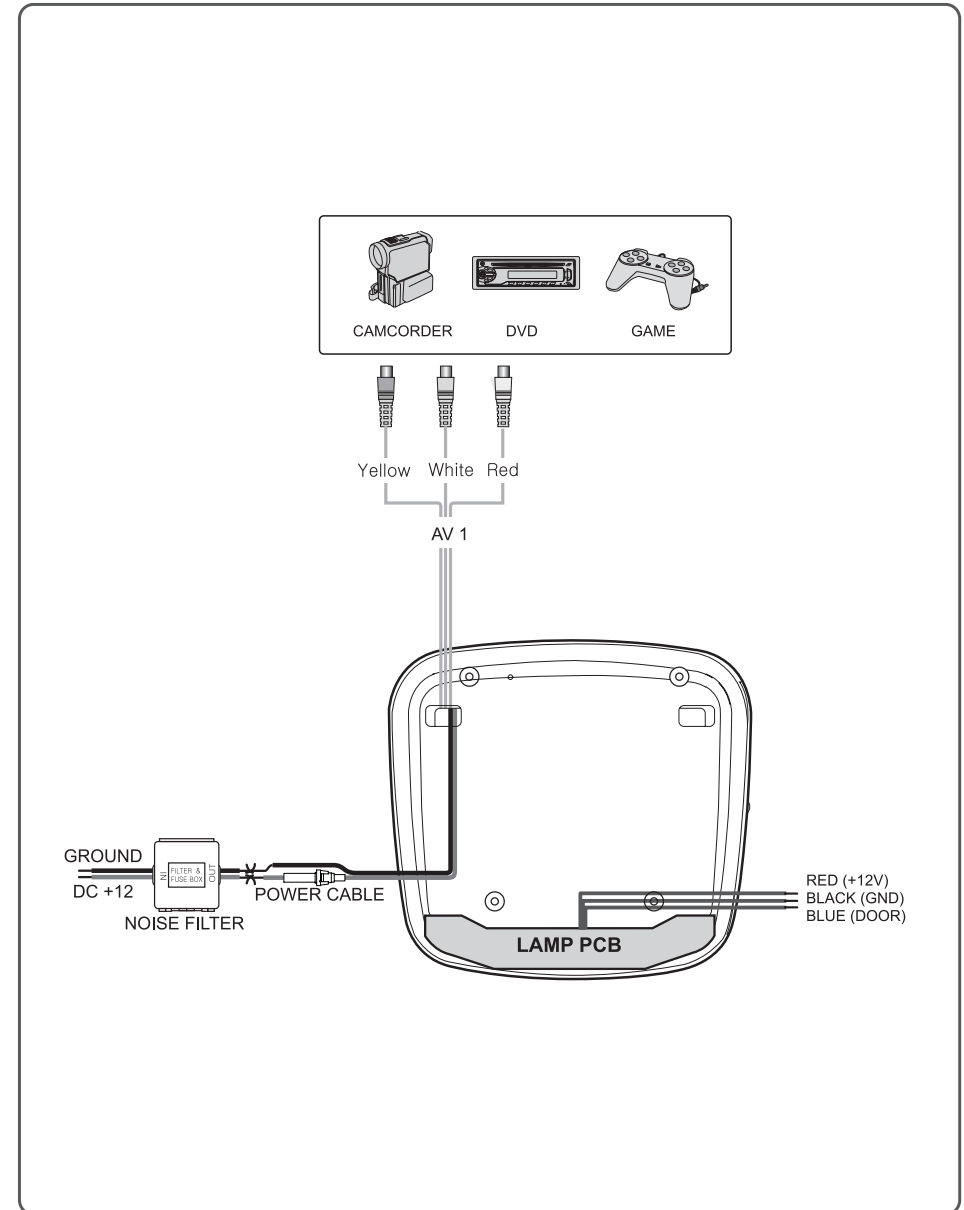


2. After locating a proper mounting position for overhead, secure the overhead mounting metal bracket on to ceiling cross member roof support. Make sure to use proper size screws to avoid screwing thru theroof of car.

3. Tighten the combo unit with the supplied 4 screws(SCREW B).



# CONNECTION DIAGRAM





# SPECIFICATIONS

---

Power	DC 12V
Screen Format	16 : 9
Resolution	1440 X 234 dots
Color System	NTSC / PAL Auto Selection
A/V Input	1 EA
Screen Size	8.5 Inch
IR Transmitter	Yes
Remote Control	Yes
Dimension	267(W) x 248(D) x 56(H)mm

**Note :** This equipment has been tested and found to comply with the limits for a Class A digital device, pursuant to part 15 of the FCC Rules. These limits are designed to provide reasonable protection against harmful interference when the equipment is operated in a commercial environment. This equipment generates, uses, and can radiate radio frequency energy and, if not installed and used in accordance with the instruction manual, may cause harmful interference to radio communications. Operation of this equipment in a residential area is likely to cause harmful interference in which case the user will be required to correct the interference at his own expense.

