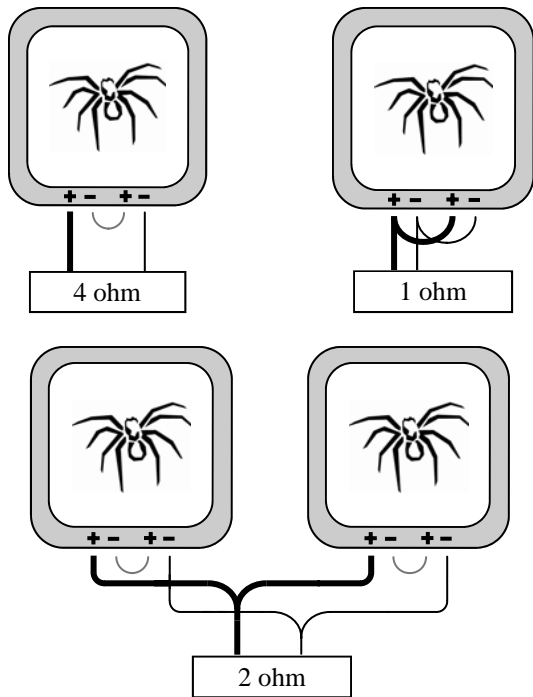


TSQ-124

TSQ-122

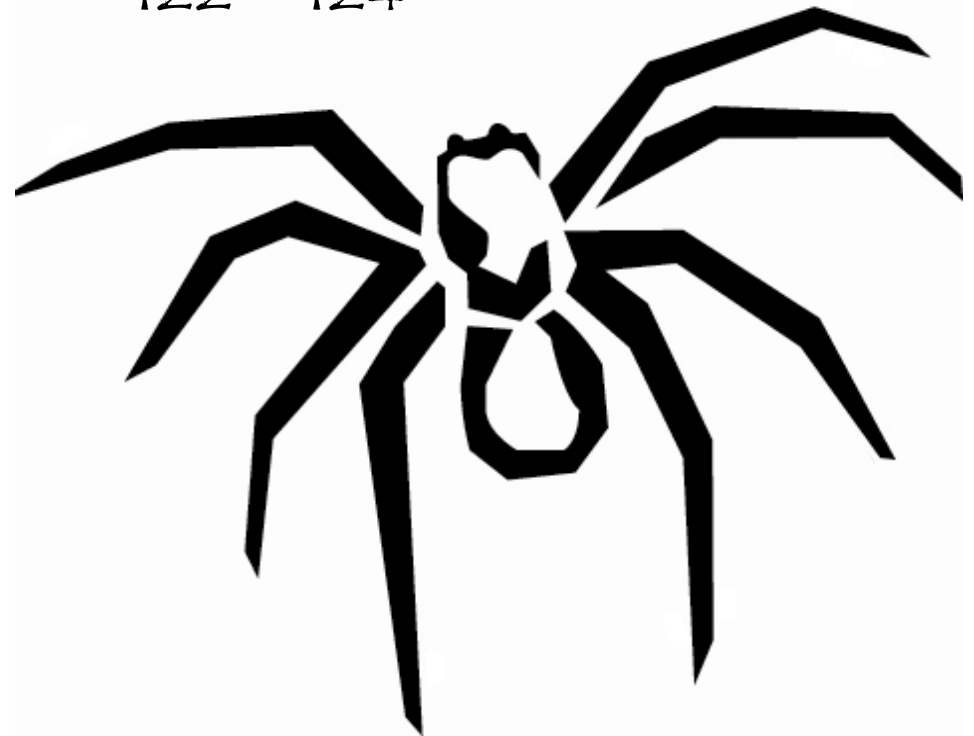


**SOUNDSTREAM**  
TECHNOLOGIES

*Tarantula*

Woofer & Enclosure  
Information

TSQ  
122 - 124



Congratulations on your new Soundstream sub-woofer purchase. We greatly appreciate your business. This may look like a run-of-the-mill cardboard box, but it's actually a protective barrier over one of the finest engineered and assembled sub-woofers available.

*Harmonic Indulgence... Listen and Feel*

## Features, Parameters, & Dimensions

36% More Cone Area Than Round Woofers  
 Stamped Steel Basket w/ Rolled Edges  
 Parallel Terminal Design  
 Injection Molded Polypropylene Dust Cap

Clear TPX Honeycomb Cone  
 Multi-Roll NBR Rubber Surround  
 100 oz. Ferrite Magnet

series wired	TSQ-122	TSQ-124
Fs (Hz)	36.19	37
Qms	5	5
Vas (Ft <sup>3</sup> )	2.031	2.31
Cms (mm/N)	.090	.090
Mms (g)	214	204
Rms (kg/s)	9.751	9.538
Xmax (mm)	15.00	15.00
Sd (in <sup>2</sup> )	24.50	24.50
Qes	.828	.952
Re (Ω)	4.1	6.1
Z (Ω)	4	8
BL (Telsa)	15.54	17.88
Rms Power (watts)	650	650
Qts	.71	.799
1w/1m SPL (dB)	87.22	86.90
Voice Coil	2.5" DVC 2 Ω	2.5" DVC 4 Ω
Overall Dimension	12.625" Sq.	12.625" Sq.
Overall Height	8.25"	8.25"
Mounting Depth	7.375"	7.375"
Cutout Dimension	11.125" Sq.	11.125" Sq.
Motor Diameter	7.25"	7.25"
Motor Height	4.75"	4.75"
Flange Width	.625"	.625"
Flange Height	.75"	.75"

## Enclosure Dimensions

Soundstream does not provide enclosure dimensions as there are infinite variables when designing a box, i.e. vehicle, amplifier, music preferences, etc... For designs tailored to your specific needs, please contact us at tech-support@soundstream.com, or 1-800-724-1377.

## Enclosure Construction

All enclosures should be made of .75" (3/4") material only. When possible, make the baffle 1.5" (1 1/2) thick and add .75" (3/4") to the depth of the enclosure to compensate. All volumes **INCLUDE** vent/port and subwoofer displacements. **DO NOT** change the volume unless you plan on adding a substantial amount of bracing. For added performance, applying a coat of fiberglass resin to the interior walls will greatly improve sealing the enclosure. Adding a thin layer of poly-fill will improve response by smoothing out reflections within the enclosure.

## Enclosure Recommendations

	TSQ-122 Sealed			TSQ-124 Sealed		
	Ft <sup>3</sup>	Qtc	F3 (Hz)	Ft <sup>3</sup>	Qtc	F3 (Hz)
<b>Min.</b>	1.50	1.021	45.03	1.50	1.137	44.66
<b>Opt.</b>	2.00	.943	42.80	2.00	1.051	42.22
<b>Max.</b>	2.50	.894	41.55	2.50	.996	40.81

	TSQ-122 Ported				TSQ-124 Ported			
	Ft <sup>3</sup>	Port Dia.	FB (Hz)	F3 (Hz)	Ft <sup>3</sup>	Port Dia.	FB (Hz)	F3 (Hz)
<b>Min.</b>	2.00	4" x 10.25"	37.95	35.86	2.00	4" x 10.25"	37.95	36.95
<b>Opt.</b>	2.50	4" x 10"	33.82	31.87	2.50	4" x 10"	33.82	32.31
<b>Max.</b>	3.00	4" x 10.75"	29.88	29.18	3.00	4" x 10.75"	29.88	29.71