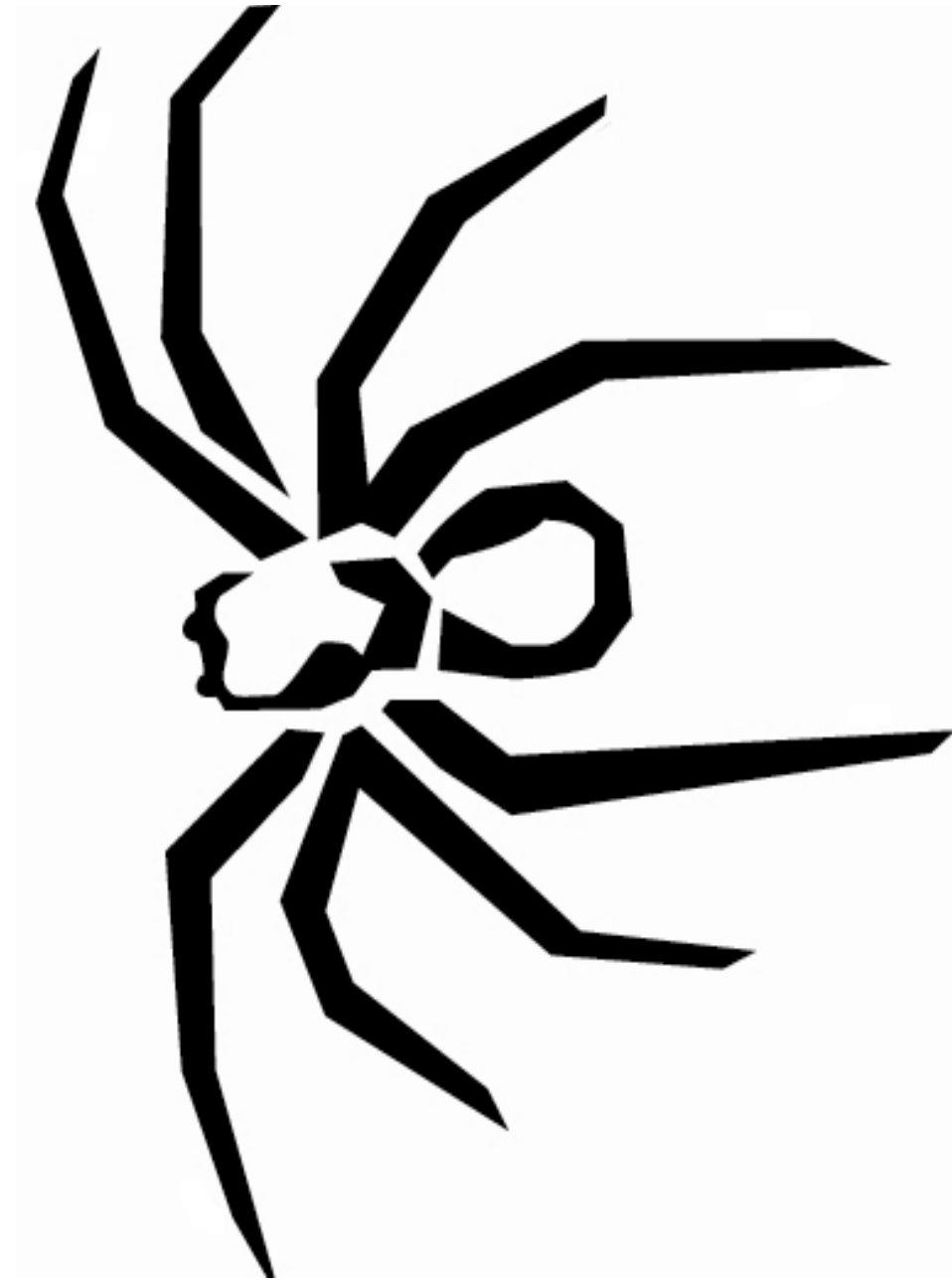


**SOUNDSTREAM**

T E C H N O L O G I E S

*Reference*

Woofers & Enclosure  
Information



Congratulations on your new Soundstream sub-woofer purchase. We greatly appreciate your business. This may look like is a run of the mill cardboard box, but is actually a protective barrier over one of the finest engineered and assembled subwoofer available.

*Harmonic Indulgence... Listen and Feel*

### Theil/Small Parameters & Specifications

series wired	RW-10	RW-12
Fs	25.94	24.75
Qms	4.3	3.905
Vas (ft^3)	.962	2.067
Cms (mm/N)	.176	.156
Mms (g)	213.9	265.2
Rms (kg/s)	8.107	10.55
Xmax (mm)	14	14
Sd (in^2)	51.16	79.78
Qes	.463	.536
Re	6.67	6.67
Z	8	8
BL (Telsa)	22.4	22.65
RMS Power	500	600
Qts	.418	.467
1w/1m SPL	82.10	84.23
Depth	6	6.5
Cutout Dia.	9	11.125
Voice Coil	2.5" DVC 4	2.5" DVC 4

### Enclosure Dimensions

Soundstream does not provide enclosure dimensions as there are infinite variables when designing a box, i.e. vehicle, amplifier, music preferences, etc... For designs tailored to your specific needs, please contact us at [tech-support@soundstream.com](mailto:tech-support@soundstream.com)

### Enclosure Construction

All enclosures should be made of .75" (3/4") material only. When possible, make the baffle 1.5" (1 1/2) thick and add .75" (3/4") to the depth of the enclosure to compensate. All volumes **INCLUDE** vent/port and subwoofer displacements. **DO NOT** change the volume unless you plan on adding a substantial amount of bracing. For added performance, applying a coat of fiberglass resin to the interior walls will greatly improve sealing the enclosure. Adding a thin layer of poly-fill will improve response by smoothing out reflections within the enclosure

### Enclosure Recommendations

	RW-10 Sealed			RW-12 Sealed		
	Vol.	Qtc	F3	Vol.	Qtc	F3
<b>Min</b>	0.5	0.57	57	0.75	0.69	49
<b>Opt</b>	0.75	0.51	58	1	0.63	48
<b>Max</b>	1	0.48	59	1.5	0.56	48

	RW-10 Ported				RW-12 Ported			
	Vol.	Port	FB	F3	Vol.	Port	FB	F3
<b>Min</b>	1.25	3x9	39	32	2	4x14	34	29
<b>Opt</b>	1.5	4x17.5	37	30	2.5	(2) 3x16	31	26
<b>Max</b>	1.75	4x16.5	34	28	3	(2) 3x15	28	24