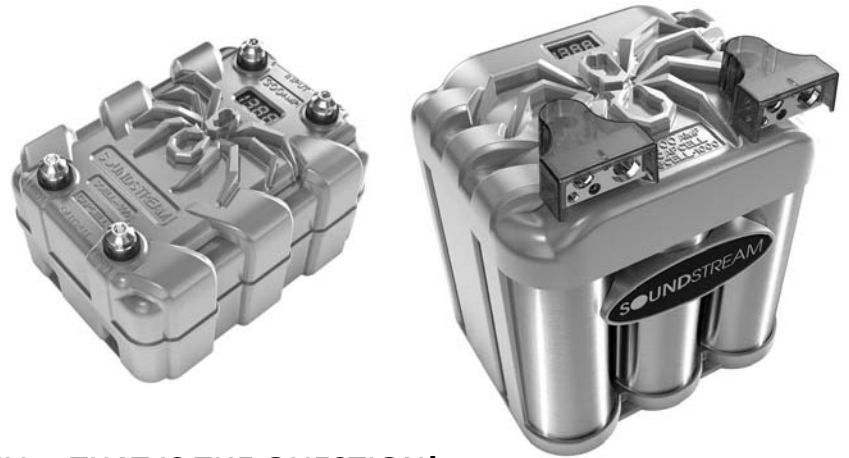




# CAPCELL



## TO CAP OR TO CELL... THAT IS THE QUESTION!

Often called a “power cap” or “stiffening cap”, some people prefer caps over secondary batteries. A second battery is great for high power systems, but should be accompanied by an upgraded alternator that can efficiently charge both batteries. This gets expensive. A cap stores power too, but can charge and discharge in a fraction of a second, depending on size. While great for transient peaks in music, it does not have the stamina that a battery has and is not an equivalent substitute.

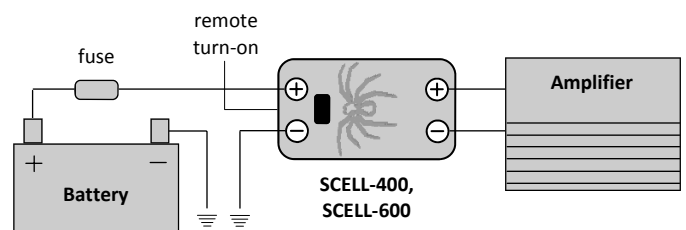
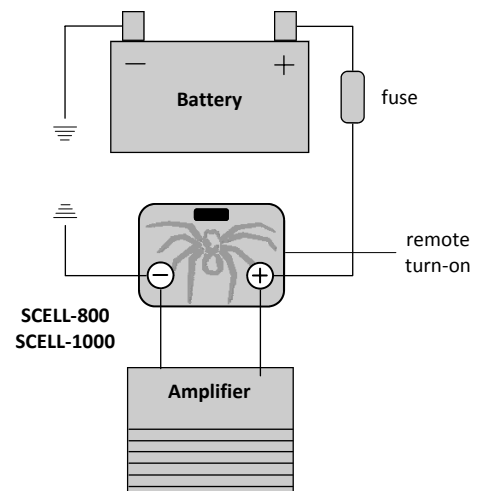
Your CapCell is a fusion of both products. The CapCell offers auxiliary power with the ability to enhance transient notes, often suppressed by the OEM battery, while reinforcing the battery during long, intense bass notes. A second alternator is not necessary in this situation, making the CapCell a perfect addition and an affordable way to supply the necessary power for a system.

### Basic Installation Concepts (also see wiring diagrams)

The best connection of your CapCell to the vehicles charging system is by dedicated power and ground wires directly from the factory battery. A secure ground to the frame of the vehicle is acceptable.

- Install power wire, including fuse 18” from battery, to the CapCell + terminal.
- Install ground wire from chassis ground within 18” to the CapCell - terminal.
- Install remote turn-on lead from source unit to CapCell turn-on lead.
- Install power wire from CapCell + terminal to amplifier + input terminal.
- Install ground wire from CapCell - terminal to amplifier - input terminal.

Your CapCell does not need to be charged. Also, your CapCell can be used as a distribution block by connecting multiple amplifiers to the + and - terminals.



Model	SCELL-400	SCELL-600	SCELL-800	SCELL-1000
CCA Rating	400	600	800	1000
Amp/Power	5	6	7	21
Amps x Seconds	400 x 3	600 x 3	800 x 3	1000 x 3
Internal Resistance	4.5 milliohm	4.5 milliohm	3 milliohm	1.6 milliohm
Terminal Type	1/4" bolt	1/4" bolt	Terminal / 1/4" bolt	Terminal / 1/4" bolt
Max Voltage	16 DCV	16 DCV	16 DCV	16 DCV
Volt Meter	Blue Digital	Blue Digital	Blue Digital	Blue Digital
Aux. Light Display	n/a	n/a	n/a	n/a
Finish	Satin Chrome	Satin Chrome	Satin Chrome	Satin Chrome
Cycle Life	3-5 Years	3-5 Years	3-5 Years	3-5 Years
Dimensions (hxwxwd)	4" x 5.50" x 7.50"	5.50" x 6.25" x 8.50"	7.25" x 8.25" x 6.50"	7.25" x 8.25" x 6.50"