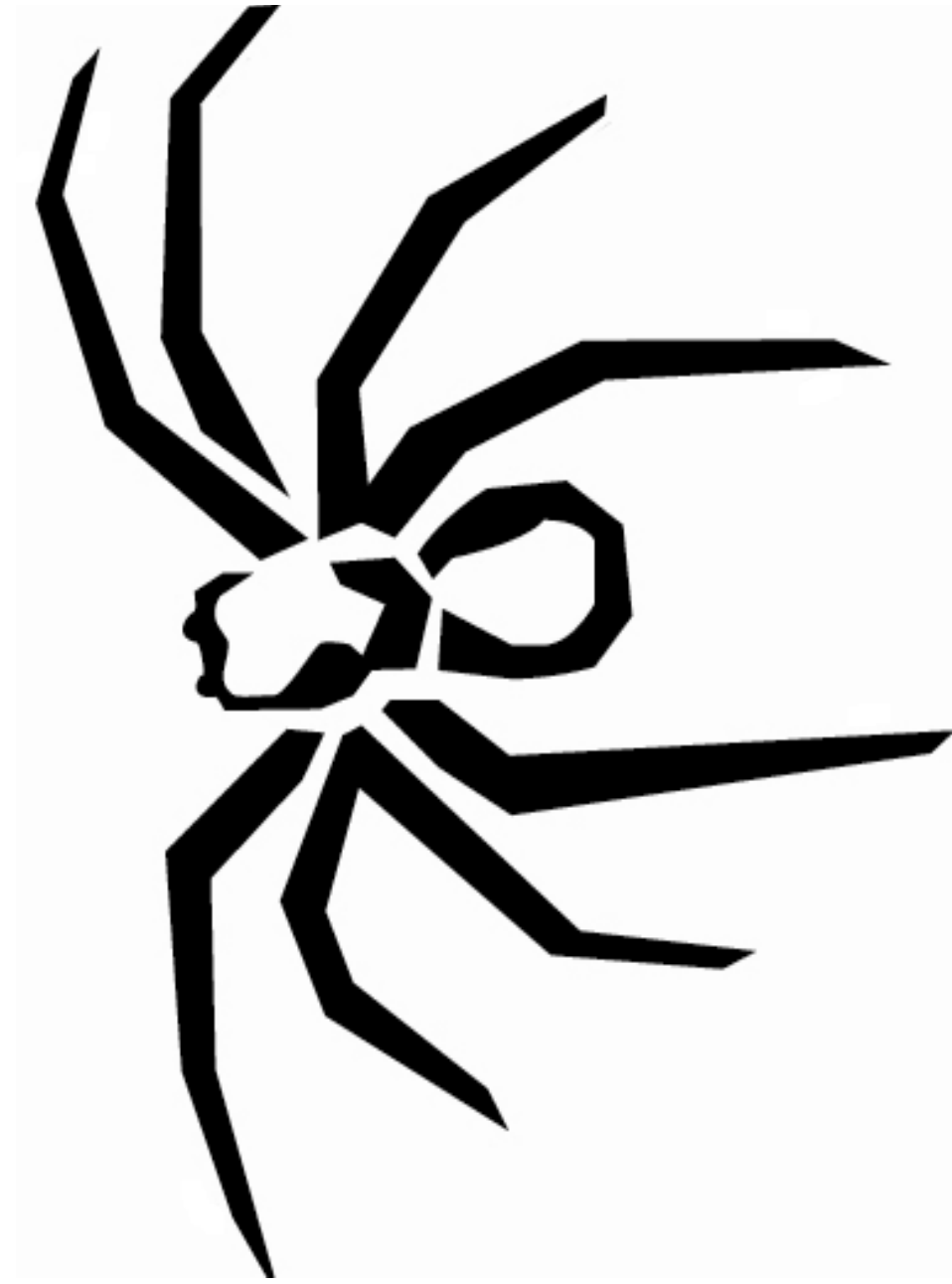


SOUNDSTREAM

T E C H N O L O G I E S

Tarantula

Woofers & Enclosure
Information



Congratulations on your new Soundstream sub-woofer purchase. We greatly appreciate your business. This may look like is a run of the mill cardboard box, but is actually a protective barrier over one of the finest engineered and assembled subwoofer available.

Harmonic Indulgence... Listen and Feel

Theil/Small Parameters & Specifications

series wired	T5-10	T5-12	T5-15
Fs	35.88	30.47	27.83
Qms	4.633	4.502	5.075
Vas (ft^3)	.706	1.266	2.984
Cms (mm/N)	.098	.084	.079
Mms (g)	203.7	326.5	429.0
Rms (kg/s)	9.823	13.840	14.290
Xmax (mm)	13.00	14.00	14
Sd (in^2)	58.90	83.70	136.50
Qes	.505	.472	.526
Re	3.20	3.20	3.20
Z	4	4	4
BL (Telsa)	17.07	20.57	21.36
Rms Power	800	900	1000
Qts	.455	.427	.476
1w/1m SPL	84.47	85.05	87.25
Depth	6.625	7.125	9.125
Cutout Dia.	9.000	11.125	14.250
Voice Coil	DVC 2 Ω	DVC 2 Ω	DVC 2 Ω

Enclosure Dimensions

Soundstream does not provide enclosure dimensions as there are infinite variables when designing a box, i.e. vehicle, amplifier, music preferences, etc... For designs tailored to your specific needs, please contact us at tech-support@soundstream.com

Enclosure Construction

All enclosures should be made of .75" (3/4") material only. When possible, make the baffle 1.5" (1 1/2) thick and add .75" (3/4") to the depth of the enclosure to compensate. All volumes **INCLUDE** vent/port and subwoofer displacements. **DO NOT** change the volume unless you plan on adding a substantial amount of bracing. For added performance, applying a coat of fiberglass resin to the interior walls will greatly improve sealing the enclosure. Adding a thin layer of poly-fill will improve response by smoothing out reflections within the enclosure

Enclosure Recommendations

	T5-10 Sealed			T5-12 Sealed			T5-15 Sealed		
	Vol.	Qtc	F3	Vol.	Qtc	F3	Vol.	Qtc	F3
Min	.5	.565	73	.75	.644	57	1.50	.628	53
Opt	.75	.512	74	1.00	.591	57	2.00	.581	54
Max	1.00	.485	75	1.50	.535	59	2.50	.551	54

	T5-10 Ported			T5-12 Ported			T5-15 Ported		
	Vol.	Port	FB/F3	Vol.	Port	FB/F3	Vol.	Port	FB/F3
Min	1.25	3x9.5	38/33	2.00	4x10	38/32	2.50	4x8	36/32
Opt	1.50	4x18	36/31	2.50	4x8	36/30	3.00	(2)4x19.75	34/30
Max	1.75	4x16.5	34/29	3.00	(2)4x20	34/29	3.50	(2)4x18.5	32/28