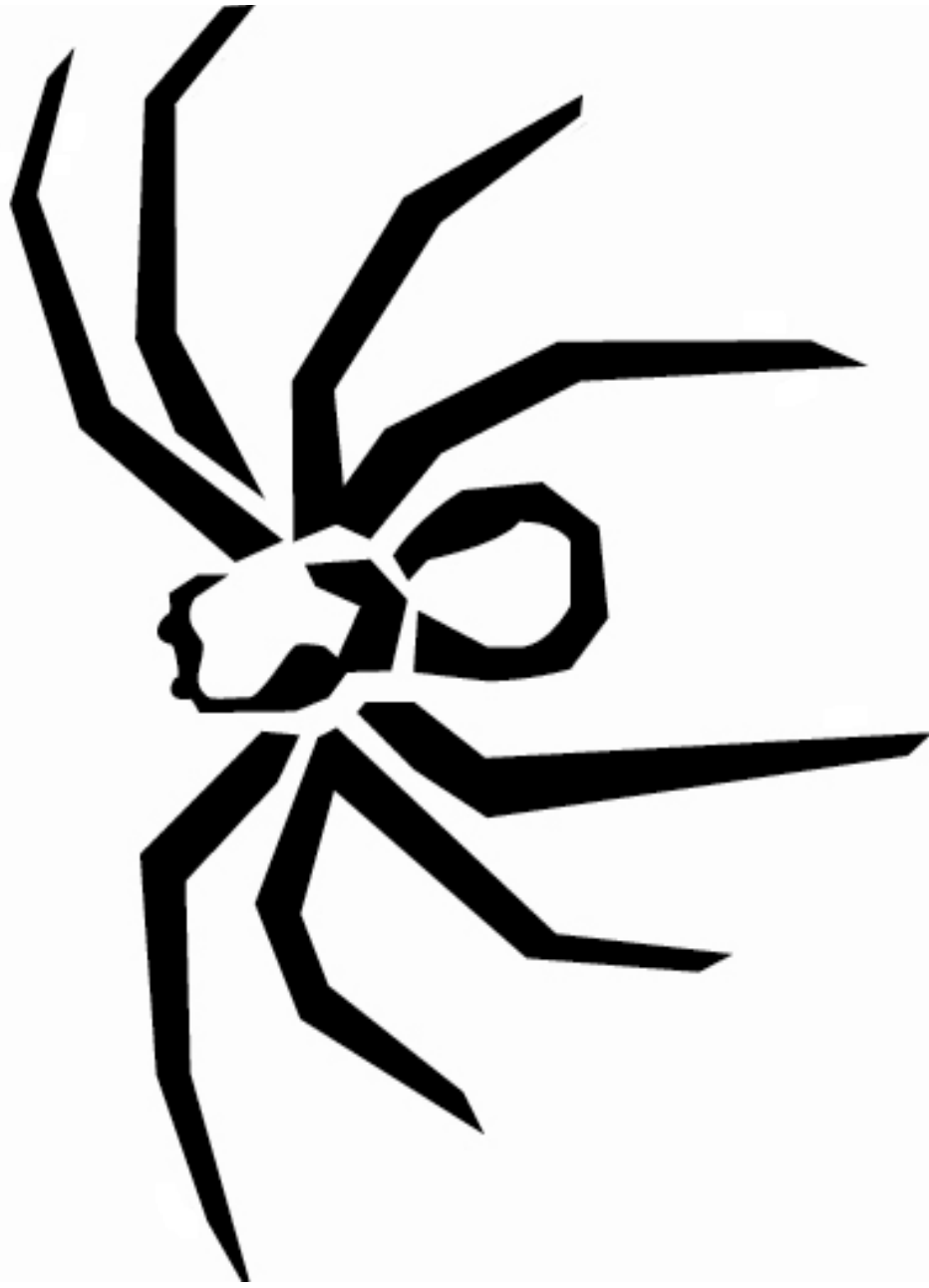


SOUNDSTREAM

T E C H N O L O G I E S

Reference R1

Woofers & Enclosure
Information



Congratulations on your new Soundstream sub-woofer purchase. We greatly appreciate your business. This may look like is a run of the mill cardboard box, but is actually a protective barrier over one of the finest engineered and assembled subwoofer available.

Harmonic Indulgence... Listen and Feel

Theil/Small Parameters & Specifications

series wired	R1-12L	R1-15L
Fs	21.50	23.7
Qms	9.210	13.4
Vas (ft^3)	2.863	4.825
Cms (mm/N)	.220	.14
Mms (g)	249.5	317.2
Rms (kg/s)	3.654	3.52
Xmax (mm)	12.70	12.7
Sd (in^2)	79.16	127.7
Qes	.490	.65
Re	6.80	6.80
Z	8	8
BL (Telsa)	21.60	22.16
RMS Power	800	900
Qts	.418	.620
1w/1m SPL	84.15	86.40
Depth	7.50	8.750
Cutout Dia.	11.125	14.250
Voice Coil	3" DVC 4Ω	3" DVC 4Ω

Enclosure Dimensions

Soundstream does not provide enclosure dimensions as there are infinite variables when designing a box, i.e. vehicle, amplifier, music preferences, etc... For designs tailored to your specific needs, please contact us at tech-support@soundstream.com

Enclosure Construction

All enclosures should be made of .75" (3/4") material only. When possible, make the baffle 1.5" (1 1/2) thick and add .75" (3/4") to the depth of the enclosure to compensate. All volumes **INCLUDE** vent/port and subwoofer displacements. **DO NOT** change the volume unless you plan on adding a substantial amount of bracing. For added performance, applying a coat of fiberglass resin to the interior walls will greatly improve sealing the enclosure. Adding a thin layer of poly-fill will improve response by smoothing out reflections within the enclosure

Enclosure Recommendations

Reference R1-12 Sealed				Reference R1-15 Sealed		
	Vol.	Qtc	F3	Vol.	Qtc	F3
Min	1	.690	43	1.5	.870	41
Opt	1.5	.610	41	2	.800	39
Max	2	.570	40	2.5	.750	37

Reference R1-12 Ported					Reference R1-15 Ported			
	Vol.	Port	FB	F3	Vol.	Port	FB	F3
Min	2	4x14.5	34	29	3	(2) 3x9.5	34	30
Opt	3	(2) 3x11	32	26	4	(2) 4x15.5	32	27
Max	4	(2) 4x17.5	31	25	5	(2) 4x16.5	28	24