

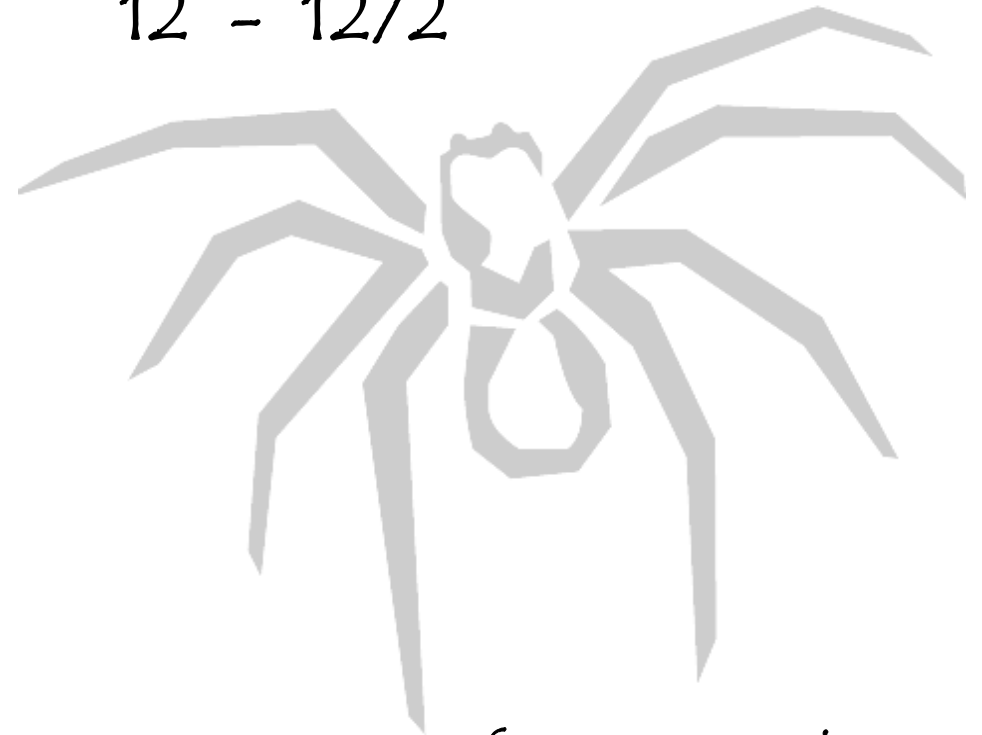
SOUNDSTREAM

T E C H N O L O G I E S

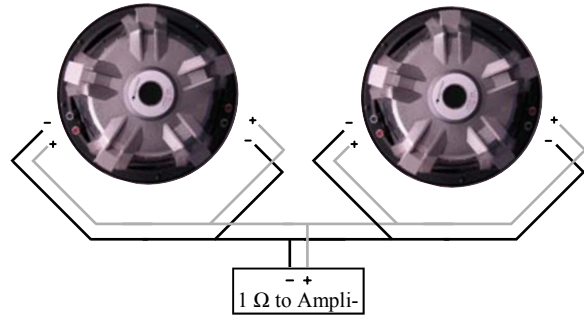
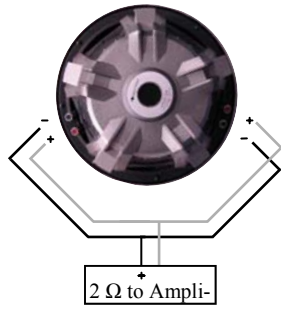
Picasso

PXW

12 - 12/2

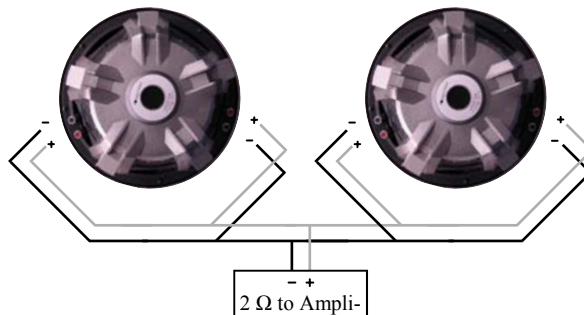
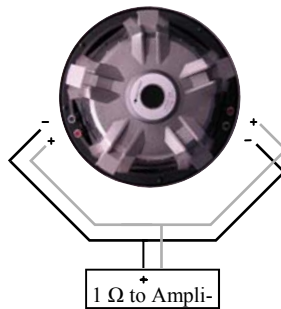


Specifications & Enclosure
Recommendations



PXW-12

PXW-12/2



Congratulations on your new Soundstream sub-woofer purchase. We greatly appreciate your business. This may look like a run-of-the-mill cardboard box, but it's actually a protective barrier over one of the finest engineered and assembled sub-woofers available.

Harmonic Indulgence... Listen and Feel

Features, Parameters, & Dimensions

Polypropylene Injection Molded Cone
NBR-Rubber Surround
8 ga. Compression Wire Terminal
Poly Cotton Composite Spider

Texture Coat Finish
Stamped Steel Basket
Suspension Integrated Tinsel Leads
Vented Back Plate

series wired	PXW-12	PXW-12/2
Fs (Hz)	27.79	25.65
Qms	4.728	6.920
Vas (ft³)	3.041	2.479
Cms (mm/N)	0.263	0.215
Mms (g)	124.6	179.4
Rms (kg/s)	4.602	4.179
Xmax (mm)	10.10	13.80
Xmech (mm)	20.70	20.70
Piston Diameter (in)	9.732	9.732
Sd (in²)	75.00	75.00
Qes	0.840	0.769
Re (Ω)	7.2	4.0
Z (Ω)	8	4
BL (Tm)	13.65	12.26
Rms Power (watts)	450	450
Qts	0.714	0.692
NO (%)	0.213	0.149
fw/1m SPL (dB)	85.30	83.75
2.8V SPL (dB)	85.89	86.89
Voice Coil Diameter (in)	2.00"	2.00"
Impedance (Ω)	DVC 4	DVC 2
M-vd (ft.³)	0.125	0.125
Overall Diameter (in)	12.50"	12.50"
Overall Height (in)	7.125"	7.125"
Mounting Depth (in)	6.50"	6.50"
Cutout Diameter (in)	11.125"	11.125"
Flange Width (in)	0.75"	0.75"
Flange Height (in)	0.75"	0.75"
Weight (lbs)	11.3	11.3

Enclosure Dimensions

Soundstream does not provide enclosure dimensions as there are infinite variables when designing a box, i.e. vehicle, amplifier, music preferences, etc... For designs tailored to your specific needs, please contact us at tech-support@soundstream.com, or 1-800-724-1377.

Enclosure Construction

All enclosures should be made of .75" (3/4") material only. When possible, make the baffle 1.5" (1 1/2) thick and add .75" (3/4") to the depth of the enclosure to compensate. All volumes **INCLUDE** vent/port and subwoofer displacements. **DO NOT** change the volume unless you plan on adding a substantial amount of bracing. For added performance, applying a coat of fiberglass resin to the interior walls will greatly improve sealing the enclosure. Adding a thin layer of poly-fill will improve response by smoothing out reflections within the enclosure. Please see last page for woofer wiring diagrams.

Enclosure Recommendations

	PXW-12 Ported				PXW-12/2 Ported			
	Cubic Feet	Port Diameter	FB (Hz)	F3 (Hz)	Cubic Feet	Port Diameter	FB (Hz)	F3 (Hz)
Min.	2.00	4" x 12"	36.1	33.8	2.00	4" x 12"	36.1	30.4
Opt.	2.50	4" x 12"	31.8	29.9	2.50	4" x 12"	31.8	26.7
Max.	3.00	4" x 12"	28.8	27.1	3.00	4" x 12"	28.8	24.2

	PXW-12 Sealed			PXW-12/2 Sealed		
	Cubic Feet	Q T C	Tuning (Hz)	Cubic Feet	Q T C	Tuning (Hz)
Min.	1.75	1.396	42.3	1.00	1.262	36.9
Opt.	2.25	1.276	39.1	1.25	1.159	34.5
Max.	2.75	1.207	37.1	1.50	1.099	33.2