

NEW BREED

Text by **Dave Pankew** // Photos by **Chris Manacop**

The enthusiast scene is fueled by the individual desire to customize and create unique vehicles proud to call our own. Not everyone shares the same tastes or personality, but that's what makes the aftermarket tuning scene so diverse. One such individual is Suneil "Sunny" Suravarapu, a long-time enthusiast who wanted to build

something to set himself apart from the crowd. A Honda Accord definitely qualifies!

"Well it better be a 6-speed and have some sort of forced induction," I muttered to Editor In-Chief Mark Pereira when he told me about it. I knew this Accord had to be special to grab our attention and was soon informed "it doesn't have a turbo... it has two!" >>



A pair of Garrett GT-25s were plumbed in by Evolution Racewerks who made everything from scratch. Go figure, there are no off-the-shelf parts for this car. An AEM dry filter hauls in the air and the fuel is mixed in with a Precision Turbo 444cc injectors regulated by an AEM FPR fed by a Walbro 190 lph pump. The air is chilled with a Yonaka intercooler and is vented by a Turbo XS BOV while the exhaust gases are channelled through an AC Autotechnic exhaust with a dual titanium tip.

The engine is managed by AEM's FIC module and was tuned by Church Automotive. Running on 5psi of boost, the V6 churns out an estimated 400whp on a high compression motor. Those figures are without the NX direct port system that Sunny installed. Since the car was not designed to put down this kind of high horse power jam, Sunny added a ClutchMasters Stage II clutch.

Since the power of a twin turbo system was more than enough for a front wheel drive car, Sunny was also after a project that could carve corners. The attention turned to the suspension where D2 adjustable coilovers were fitted to the project. A set of Progress sways bars were added to reduce roll and a DC Sports strut bar was added to the chassis up. A set of Ingalls camber arms were added to achieve the right stance. A proper connection to the ground was vital,

so Sunny opted for a set of BFGoodrich g-Force KDWs wrapped around PIAA Super Rozza staggered wheels with 19x8.5 inch fronts and 19x9.5-inch rears in super black. The stopping power came in the form of a Wilwood big brake kit that had to be customized to fit since there was no application for an Accord.

From the exterior, the car is difficult to identify as an Accord. An AIT Racing body kit was added that consists of a front and rear bumper and sideskirts, but the AIT treatment didn't stop there. Sunny installed an AIT Racing carbon fiber hood, carbon fiber roof and roof spoiler. A Grillcraft upper and lower grille was added to give the front end a more aggressive look along with DEPO HID headlights and rear LED tails. The doors were also fitted with a Verticals Doors kit before M1 Autobody shot the whole project in House of Kolors candy black cherry paint.

Sunny wanted the cabin to be a place that showed off his style but at the same time was functional. The entire interior was recovered in full Katzin two-tone leather and suede. An Ignited Performance switch panel was added in addition to an engine >>



SONIC BOOM

The sound and video was taken care of by Xtreme Image in City of Industry, CA. A load of Soundstream products were installed starting with a Soundstream VIR 5000-series headunit.

FEEL THE HEAT

HEAT WAVE

SOUTH PADRE ISLAND
SPRING BREAK JAM
MARCH 6-7, 2010

SAN ANTONIO TEXAS
SAN ANTONIO HEAT WAVE
APRIL 24-25, 2010

TEXAS SHOWDOWN

HOUSTON TEXAS
TEXAS SHOWDOWN
JUNE 19-20, 2010

AUSTIN TEXAS
CUSTOM SOUNDS TEXAS HEAT WAVE
JULY 23-25, 2010

CORPUS CHRISTI TEXAS
CORPUS CHRISTI HEAT WAVE
OCTOBER 2-3, 2010

DALLAS TEXAS
HEAT WAVE FINALS
NOV 20-21, 2010



INSTALL LIKE A PROFESSIONAL

GREAT CAREER OPPORTUNITY IN ONLY 18 WEEKS

METRO AUTO ELECTRONICS TRAINING INSTITUTE

- > CUSTOM FABRICATION
- > AUTO SECURITY
- > MOBILE VIDEO
- > AUTO SOUND

NOW OFFERING AUTO BODY PROGRAM CALL FOR DETAILS!

METRO'S ADVANTAGE

- Federal Student Aid
- 10,000 square foot facility
- State of the art training
- M.E.C.P. Certification
- 70% hands on training
- Career Guidance
- Job Placement Assistance
- 15 years + of teaching experience
- Housing Available for Out-of-State students

Metro Auto offers courses in the installation of auto sound, auto security and cellular components and in enclosure design & custom fabrication.

Day and Eve Classes Available

WE ARE THE ONLY MOBILE ELECTRONIC TRAINING INSTITUTE IN THE COUNTRY TO OFFER ***FEDERAL STUDENT LOANS PARENT PLUS LOANS & PELL GRANTS!**

* TO THOSE THAT QUALIFY

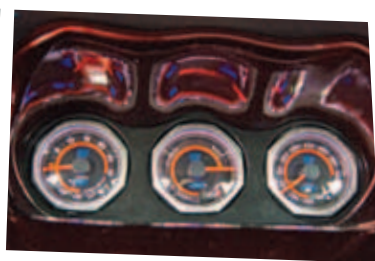
WWW.METRO-AUTO.COM
800-649-6387
111 Market St. Kenilworth, NJ 07033

WANT TO LEARN FROM HOME?
HOMESTUDY PROGRAMS AVAILABLE
WWW.METROHOMESTUDY.COM

switch. An ATI triple gauge pod was custom molded into the dash by Nexson at V6p.net with AC Autotechnic gauges: oil pressure, AFR and boost to keep tabs on the twin turbo Honda.

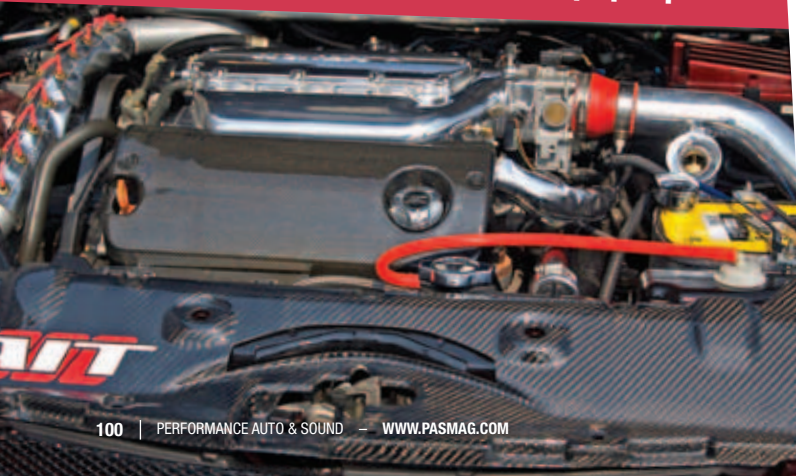
The sound and video was taken care of by Xtreme Image in City of Industry, CA. A load of rockin' Soundstream products were installed starting with a Soundstream VIR 5000-series headunit. The bass lines are belted out of a pair of Soundstream Tarantula 10-inch subs in custom suede and fiberglass/painted enclosure and a total of three Tarantula amps. Soundstream Tarantula components speakers were placed throughout the cabin to handle the mids and highs. A pair of 7-inch Soundstream LCD screens have been placed in the trunk to relay video and entertainment. All of the wiring, fuses and distribution blocks are by Tsunami and the whole system is lit up by an Optima Red Top battery.

Sunny's one-of-a-kind Accord (which he dubbed "KWKEMRT" on his license plate due to his Indian heritage) has been around for a long while, displayed and winning at many HINs, SEMAs and even Nisei week. We have to hand it to Sunny for being original and continuing to reinvent his project until he got inked in our magazine. **PBS**



MOTIVATION

A pair of Garrett GT-25s were plumbed in by Evolution Racewerks who made everything from scratch. Go figure, there are no off-the-shelf parts for this car. An AEM dry filter hauls in the air and the fuel is mixed in with a Precision Turbo 444cc injectors regulated by an AEM FPR fed by a 190 lph pump.



OWNER: SUNEIL "SUNNY" SURAVARAPU
LOCATION: CITY OF INDUSTRY, CA
VEHICLE: 2004 HONDA ACCORD

ENGINE

Honda 3.2L V6

ENGINE MODIFICATIONS

AC Autotechnic carbon fibre/titanium tip exhaust
 AEM FIC, fuel filter and fuel regulator
 AEM dry filters
 Evolution Racewerks turbo system
 Garrett Turbo GT-25 x2
 Hose Techniques hoses
 Innovative motor mounts
 NGK spark plugs and O2 sensors
 Nitrous Express nitrous system
 Precision Turbo 440cc fuel injectors
 Russell Performance braided hoses
 Turbo XS BOV
 Walbro 190 LPH fuel pump
 Yonaka Motorsports intercooler
 AMSOIL Signature Series OW-30
 100% Synthetic Motor Oil

ENGINE MANAGEMENT

Church Automotive tune for 5psi of boost

SUSPENSION

DC Sports front sway bar
 D2 Racing Sport coilovers
 Progress rear sway bar (provided by Corsport)
 Ingalls front and rear camber kit

WHEELS, TIRES, BRAKES

PIAA Super Rozza staggered wheels super black
 (19x8.5-inch 19x9.5-inch)
 BFGoodrich g-Force T/A KDW
 Willwood custom big brake kit
 Autoaccessorystore.com cross drilled rotors

EXTERIOR

Paint and body work by M1 Auto body
 AIT Racing body kit
 AIT Racing carbon fibre rear diffuser
 AIT Racing carbon fibre roof
 AIT Racing carbon fibre vented hood
 CorSport window deflectors
 Autoaccessorystore.com carbon fibre door pillars
 DEPO JDM black housing headlights
 DEPO rear LED taillights
 Grillcraft upper front insert
 House of Kolors candy black cherry
 Ignited Performance HIDs
 Vertical Doors kit

INTERIOR

Katzkin 2-tone full interior
 AC Autotechnic gauges, turbo timer, and fan controller
 ATI dash mount gauge holder
 Beltronics RX75 Plus
 Beltronics Vector FX1

Neuspeed short shifter
 Clifford alarm system
 Hayame carbon fibre pedals
 Ignited Performance switches / buttons

AUDIO & MULTIMEDIA

Xtreme Image Stereo in City of Industry, CA
 Soundstream Products - Soundstream Tarantula 10-inch subs x2
 Soundstream 7-inch monitors x2
 Soundstream Tarantula amps x3
 Soundstream Tarantula Component speakers
 Soundstream VIR 5000 headunit
 Soundstream Digital processor
 Tsunami Battery distribution
 Tsunami fuse blocks
 Tsunami Battery terminals
 Tsunami Competition battery
 Tsunami RCA / speaker wire
 Metra dash kit

SPONSORS

AEM
 AIT Racing
 Autoaccessorystore.com
 Auto Tech Interiors
 AMSOIL
 Beltronics
 BFGoodrich
 Church Automotive Testing
 Clutch Masters
 CorSport
 DC Sports
 DEPO
 D2 Racing sports
 Edelbrock
 Evolution Racewerks
 Garrett by Honeywell
 Grillcraft
 Hose Techniques
 House of Kolors
 Ignited Performance
 Innovative Mounts
 Katzkin Leather
 Meguiar's
 M1 Auto body
 Neuspeed
 Nexson @ V6p.net
 NGK
 Nitrous Express
 Optima Batteries
 PIAA
 Precision Turbo
 Russell Performance
 Tsunami
 Thermo-Tec
 Tsunami
 Xtreme Image
 Vertical Doors
 Walbro
 Yonaka Motorsports